



SPECIFICATIONS

INERO™ FLOOD BARRIER H 180
(height 180 cm)

Material: Seawater-resistant 5 mm marine-grade aluminium EN-AW-5754 H22.

Dimensions: 2 567 x 600 mm. Plus a 45 mm lip on one short side and a 115 mm lip on one long side.

Weight: 24.8 kg

SUPPORT LEGS

Material: Aluminium profile

Dimensions: 1 526 x 180 x 40 x 5 mm

Weight: 6.7 kg

FOOT BEAM

Material: 5 mm marine-grade aluminium

Dimensions: 2 072 x 340/240 mm

Weight: 7.6 kg

CORNER SECTION

Four 22,5° corners make a 90° corner.

Material: Seawater-resistant 5 mm marine-grade aluminium EN-AW-5754 H22

Dimensions: 2 567 x 600 / 210 x 5 mm

Weight: 17.2 kg

INERO™ FLOOD BARRIER H180

Inero's patented flood barrier in its highest version, designed to withstand water levels up to 180 cm. A sturdy, durable barrier with quick connectors for easy, time-saving installation.

INERO™ flood barrier sections, support legs and foot beams are made of seawater-resistant marine-grade aluminium. The material has high durability and withstands extremely tough outdoor conditions. The sections are erected using a sturdy aluminium support leg with a conical foot beam. The unique shape of the foot beam, combined with the integrated gripping teeth, guarantees extra stability and an optimal grip on all sorts of substrates. The sections interlock using a patented quick connector to form a continuous, flexible barrier that adapts to the substrate. INERO™ flood barriers are suitable for all common substrates, such as concrete, grass, gravel and asphalt. They can also be curved 90° through the use of corner sections – outer and inner corners of 22.5°. The barriers stop and withstand both standing and rushing water and can be assembled directly in the water as long as the water level is no more than 30 cm.

ASSEMBLES IN FOUR EASY STEPS

INERO™ flood barriers are easy to assemble, even with no previous knowledge. Six people can install 100 metres of complete barrier in about an hour.

1. **Affix the foot beam to the support leg.**
2. **Connect the barrier sections with the quick connector. It is easiest to do so from left to right.**
3. **Affix the support legs and the foot beam to the barrier section. The two galvanised screws and pre-mounted nuts fit into keyhole slots on the long side of the barrier. Adjust by hand or using a tool.**
4. **Roll the specially designed polyethylene membrane over the barrier framework, attach with clips on the top edge, anchor at the bottom with sand/gravel, sandbags or heavy chains.**



INERO™
FLOOD PROTECTION

www.inero.se

LOGISTICS

Lightweight materials and innovative design contribute to low weight and good stackability, which simplifies storage and transport. One cargo pallet, specially designed in galvanised steel, will hold 25 metres of H 180 barrier. A cargo container can hold 200 metres. The standard configuration of one pallet of INERO™ flood barriers, such as the H 180, is as follows: 25 metres of barrier sections, support legs and foot beams for 25 metres, a plastic box of 50 plastic clips and user manual, screws with pre-mounted nuts and one spanner, and polyethylene membrane for 25 metres. Weight per pallet: 1850 kg.

TESTING

Together with strength calculations and simulations independent third party institutes in Germany* and the UK* have tested the Inero barrier. The tests investigated the barrier's stability, performance, leakage rate and impact resistance with good results. The end results

showed that the barrier stands stable at full water pressure of one meter and while overtopping, stands stable after the impact of heavy logs, is easy to install and has a leakage rate below 40 l/h/m both after 1 hour and after 18/22 hours.

ENVIRONMENT

INERO™ low barriers are designed with minimal materials. Their low weight also means reduced carbon emissions from transport. The barriers have an extremely long service life and are 100% recyclable. The polyethylene membrane is single-use only and is suitable for eco-friendly incineration.

*Wasserbau's institute and Hamburg University of Technology and HR Wallingford

INERO™ flood barriers are also available in 80 cm, 100 cm and 150 cm height. The size of the quick connector is the same regardless of height, which means that different barriers can be interconnected.

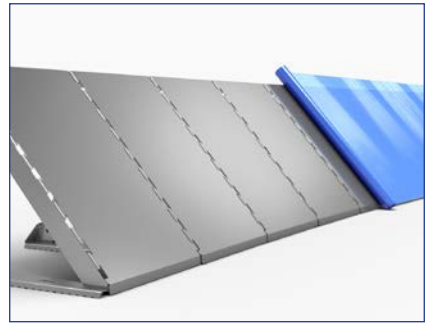
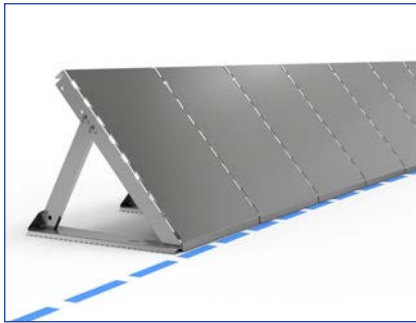


Photo showing installation of the H180 barrier. Simple to carry and handle, only 25 kg per section.



The double folded membrane is fixed with the clips. After clipping, fold down the edge and fix the membrane to the ground.



Photo shows the barrier H180 from the water side.



www.inero.se